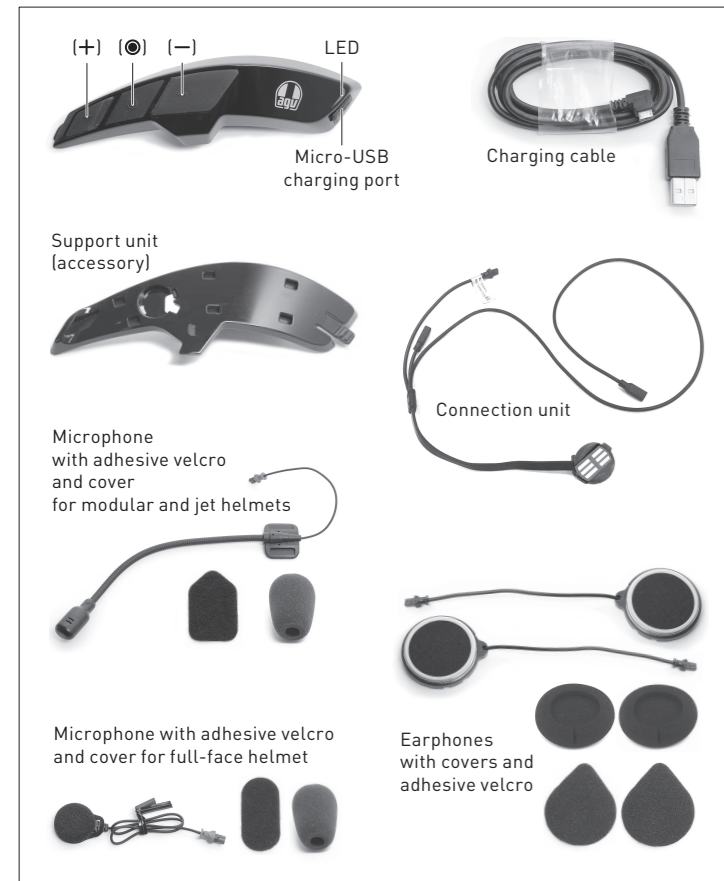


OVERVIEW



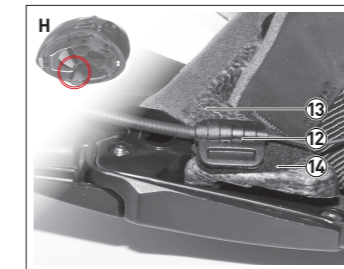
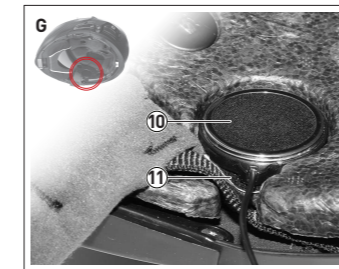
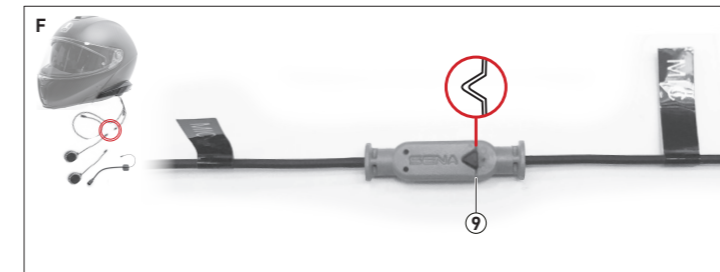
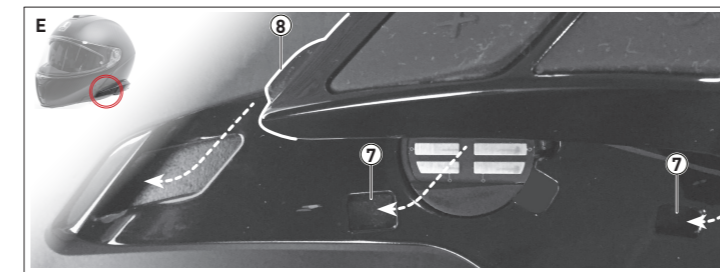
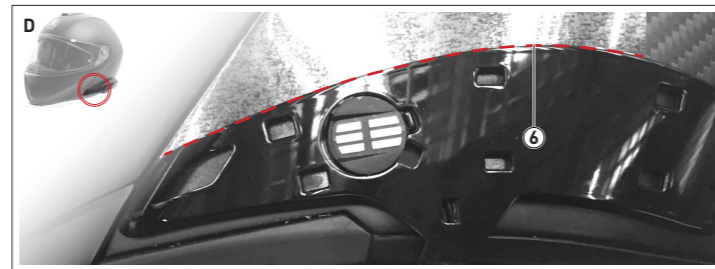
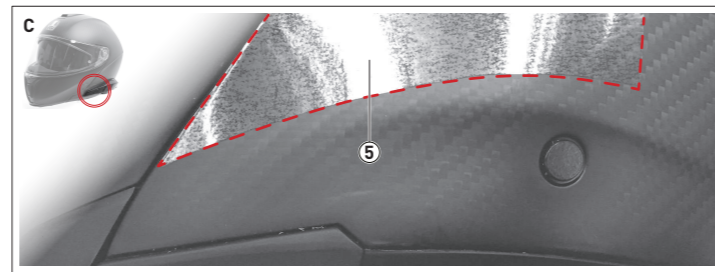
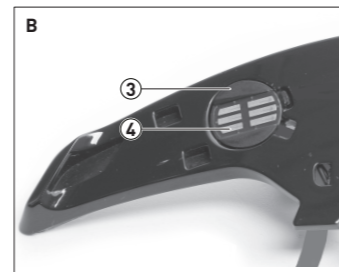
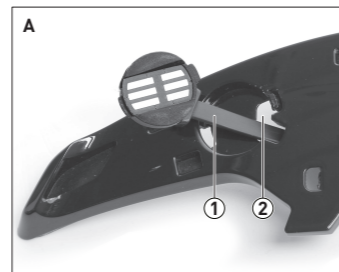
ASSEMBLY

Support unit

- Steer the connection unit wiring (1) through the passage made on the support unit (2).
- Place the connection unit (3) in its own place on the support unit, making sure that the metal contacts (4) are placed to the outside.
- Cut out the positioning adhesive mask (5) and apply it to the surface of the shell. The mask is supplied with the support unit, and it includes its own instructions (the images shown in this document are intended as reference only).
- Remove the adhesive from the back of the support unit, then glue it to the helmet shell aligning it to the edge (6) of the positioning adhesive mask.

Intercom

- Hook ARK to the support unit. Execute the action in two steps:
 - Place ARK on the support unit by inserting the engagement pins into the six seats (7);
 - Push ARK towards the front of the helmet by binding the front tooth (8) to the support unit. A "click" should confirm a safe engagement.
- Once the cheek pads have been removed (see the helmet user manual), make the wiring connections paying attention to the coupling direction of the male and female pins (9). The black pins connect the earphones, the red pins connect the microphone.
- Apply the earphones (10) to the polystyrene shell using the supplied adhesive velcro (11).
- Apply the microphone (12) to the polystyrene shell (13) using the supplied adhesive velcro (14). Apply the microphone for modular and jet helmets to the polystyrene surface. Apply the microphone for full-face helmets to the inner surface of the chin, right in front of the mouth.



GETTING STARTED

Interactions

- Tap (*)
 - Double tap (*)
 - Push for n (*)
 - Audio feedback: voice message from the earphones (*)
 - Visual feedback: LED flashes
- (*) An audio feedback "Beep" follows each impulse

Power On/Off

- While switching on, the LED reports the battery status:
- | | |
|------------|------------|
| ██████████ | 70% > 100% |
| ███████ | 30% > 70% |
| ███ | 0% > 30% |
- "Hello" in power on
 - "Goodbye" in power off

Recharge

Charge the device before the first use.

- Loading
- Loading completed



Volume adjustment

- (+) Volume up
- (-) Volume down

CONNECTIVITY

Phone pairing

- After 10": "Configuration"

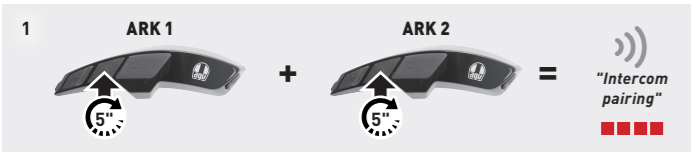
Attention! After 5" the vocal message "Intercom pairing" is heard. Ignore the signal and continue pushing until the vocal message "Configuration" is heard.
- "Phone pairing"
- "Your headset is paired."

If the smartphone requires a pin code, enter four times the zero:

0 0 0 0

CONNECTIVITY

Pairing two or more ARKs



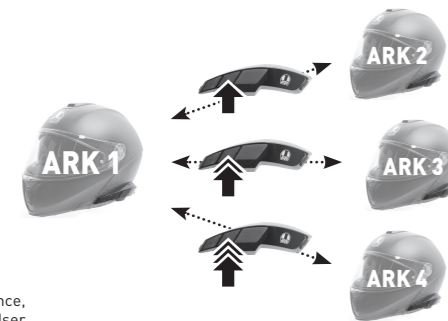
Multiple pairing: replicate the procedure to match your ARK to other ARKs. Warning: connect with a single ARK at a time. It is not possible to combine multiple systems simultaneously.

Single / Multiple conversation

Once the combination with other ARKs is made, a two-way communication with each of them can be started and ended.

To open and close a two-way conversation, press the center button:

1. A single tap for the first connection
2. A double tap for the second connection
3. A triple tap for the third connection



Notice! To start a conference, please refer to the ARK User manual, available for download from www.agv.com.

PHONE CALL

Answer



Voice dial



MUSIC

Play



Previous track



End / Reject



Speed dial



Pause

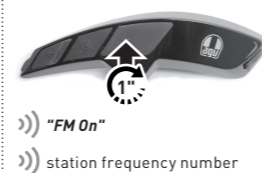


Next track

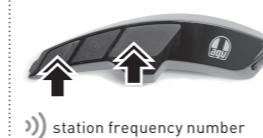


RADIO

On / Off



Stations seek



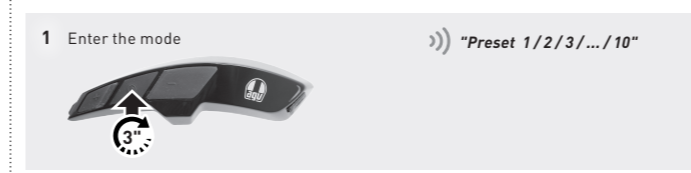
Scroll the preset stations



Scan FM band

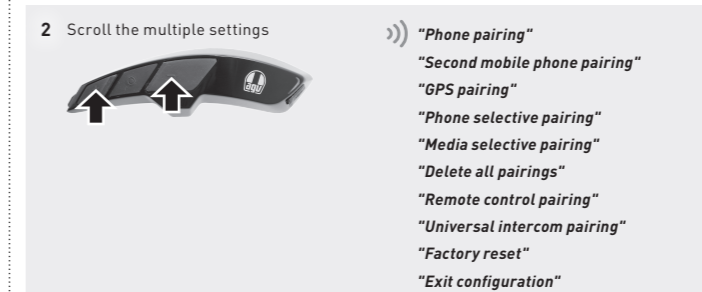


Save or delete a preset station position



SETTINGS

Configuration menu



AGV Device Manager

Connect ARK to a computer via a USB cable. Download AGV Device Manager from the AGV website: www.agv.com. Then, start AGV Device Manager and click on Device Settings to configure ARK.

Sena SF Utility

Download the Sena SF Utility app (available for Android and iOS). Pair the smartphone with ARK and start the application. Then, use the *Configuration* menu within the app to configure ARK.

ARK User manual

The complete *ARK User manual* is available for download at the AGV website: www.agv.com.



ARK AERODYNAMIC COMMUNICATION SYSTEM FOR AGV HELMETS
Quick start guide



Dainese S.p.A.
Via Louvigny, 35
36060 Colceresa (VI) - Italy
ph.: +39 0424 410711
fax: +39 0424 410700
www.agv.com



ARK_QSG_ENG_20190315